

FUNDING GUIDE

St. George's Nursery

Nurturing & Inspiring Young Minds

MARCH 2024



**St. George's
Nursery**

EARLY YEARS FUNDING EXPLAINED

Understanding early years funding can be complex, so we aim to provide clarity below.

In England, there are currently a few government-funded early education schemes that offer funded childcare for children aged two, three and four:

- 15 hours childcare for 2-year-olds (low income families or children with additional needs)
- 15 hours free childcare for all 3 and 4-year-olds (universal entitlement)
- 15/30 hours free childcare for eligible 2, 3 and 4 year-olds (working parents)



	9-23 Months	2 Years	3-4 Years	Tax-free childcare
Eligible Working Families	15 hours <i>From Sept 2024</i> 30 hours <i>From Sept 2025</i>	15 hours <i>From April 2024</i> 30 hours <i>From Sept 2025</i>	30 hours <i>Current</i>	Up to £2000 per child
Families Receiving Additional Government Support	/	15 hours <i>Current</i>	/	/
All Families	/	/	15 hours <i>Current</i>	/

EXPANDING CHILDCARE FUNDING

Starting from April 2024, existing childcare support will be expanded in phases. By September 2025, most working families with children under the age of 5 will be entitled to 30 hours of childcare support.



Who Can Benefit From Childcare Funding?

APRIL 2024

Eligible working parents of two-year-olds will be able to access 15 hours of childcare support

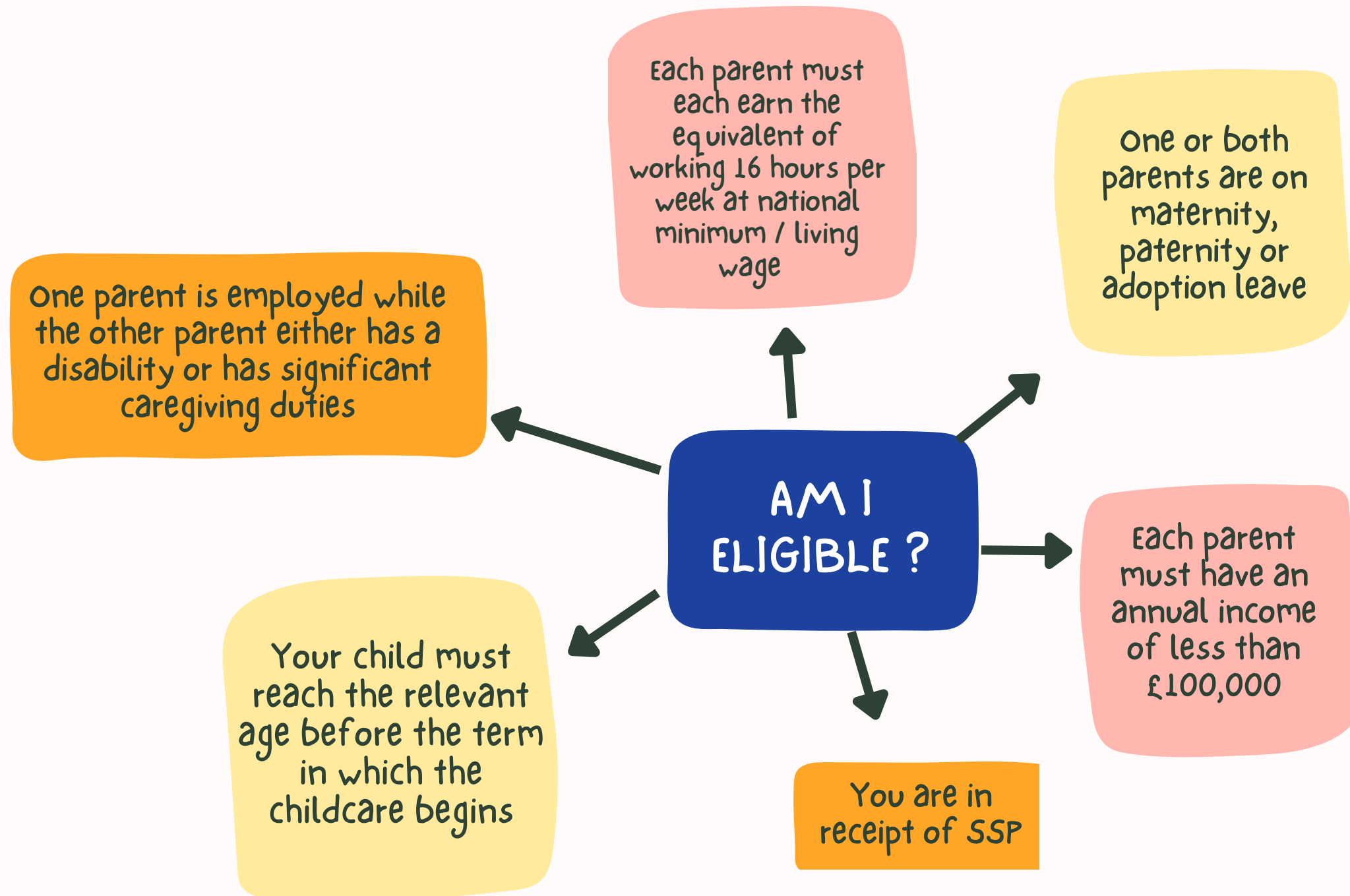
SEPTEMBER 2024

15 hours childcare support will be extended to eligible working parents of children from the age of 9 months to 3-year-olds.

SEPTEMBER 2025

Eligible working parents with a child from 9 months old up to school age will be entitled to 30 hours of childcare a week.

ELIGIBILITY CRITERIA



Each of the childcare schemes has different eligibility rules so it's important to check which of the schemes is right for you.

You must live in England to apply for free childcare. The amount of free childcare you can get depends on:

- your child's age and circumstances
- whether you're working (employed, self-employed, or a director)
- your income (and your partner's income, if you have one)
- your immigration status

You will need to verify your eligibility for funding by visiting the government website provided below: www.childcarechoices.gov.uk

FUNDING AT ST. GEORGE'S NURSERY

The biggest demand is for all year round, full-time and full-day nursery spaces. Our planning & staffing arrangements are tailored to fulfil this requirement. We therefore carefully allocate nursery places, striving for consistent attendance across all days and throughout the year, whenever feasible.

STRETCHED FUNDING

The 15 or 30 hours isn't usually enough for parents and their work-life schedules. And many parents find it isn't enough for their children to have a consistent routine as well as to take full advantage of nursery life and all the activities that we offer. Therefore, we provide both the funded 15 & 30 hours on a "stretched basis" across 51 weeks, allowing families to access funded hours evenly distributed throughout the year.

By stretching the 15 or 30 hours across the whole year, parents will still be entitled to 570 (15 hours) or 1,140 (30 hours) funded hours over the year.



OUR FEES

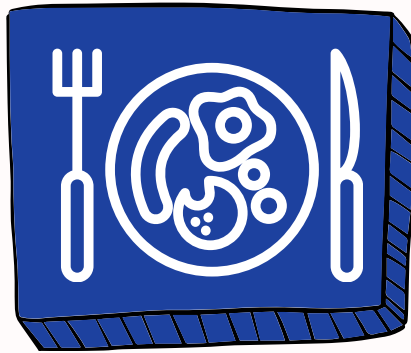
Although government funding is a great way to help with childcare expenses, it only extends to a restricted number of hours and does not cover all the necessary items and additional features that contribute to making St. George's Nursery unique.

The Government states that nurseries should use government funding to provide high-quality, flexible early education and childcare. It shouldn't use this funding to cover the cost of consumable items, such as drinks, meals, or additional services, such as baby yoga, music lessons and trips. Therefore, a charge will be applied to cover the cost of provisions, activities, consumable & extras, that are not covered by the government funding.

What parents will pay will consist of the non-funded hours you do, and for our 'provisions and extras.'

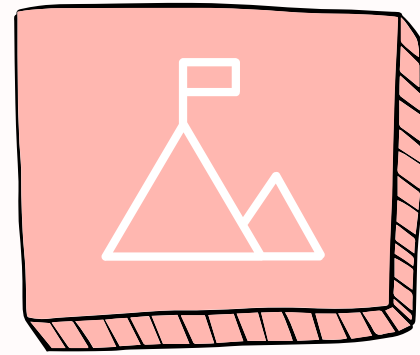


“Provisions & Extras” WHAT’S INCLUDED?



Meals, Drinks & Snacks

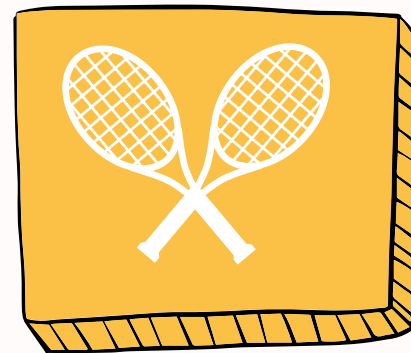
Healthy meals, made on-site by our wonderful chefs, who cater for various dietary requirements.



Trips

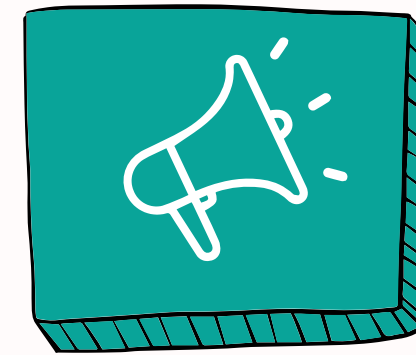
Outdoor learning and activities, as well as local trips.

These are great learning experiences for the children, and are a great way to prepare children for formal education & later life.



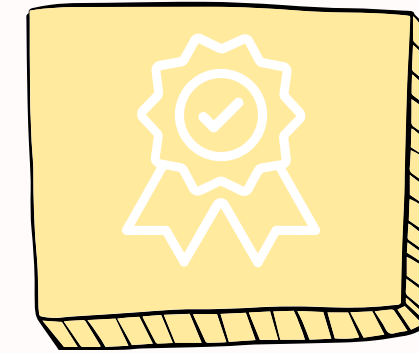
Extracurricular Activities

Activities such as Dance, Sports, Yoga, Dough Disco, and more.



Staffing

Continuous staff training to ensure that our team is trained to the highest standards to provide your child with the best start to their educational journey.



Parental Involvement

Events for parents, such as stay & play sessions, parent's evenings, graduation parties & more.

Parent access to Family app & daily diaries. This helps parents feel more involved in their child's nursery experience and so they can keep up to date with nursery activities as well as their child's progress.

HOW THIS WILL LOOK FOR PARENTS:

*The below calculations are an example of how the funding and fees could look for you. Non-funded rate and provisions & extras rate may vary by nursery. The below figures are based on Summer-term hours, & non-funded hours full-day rate of £70, and provisions & extras rate of £2.

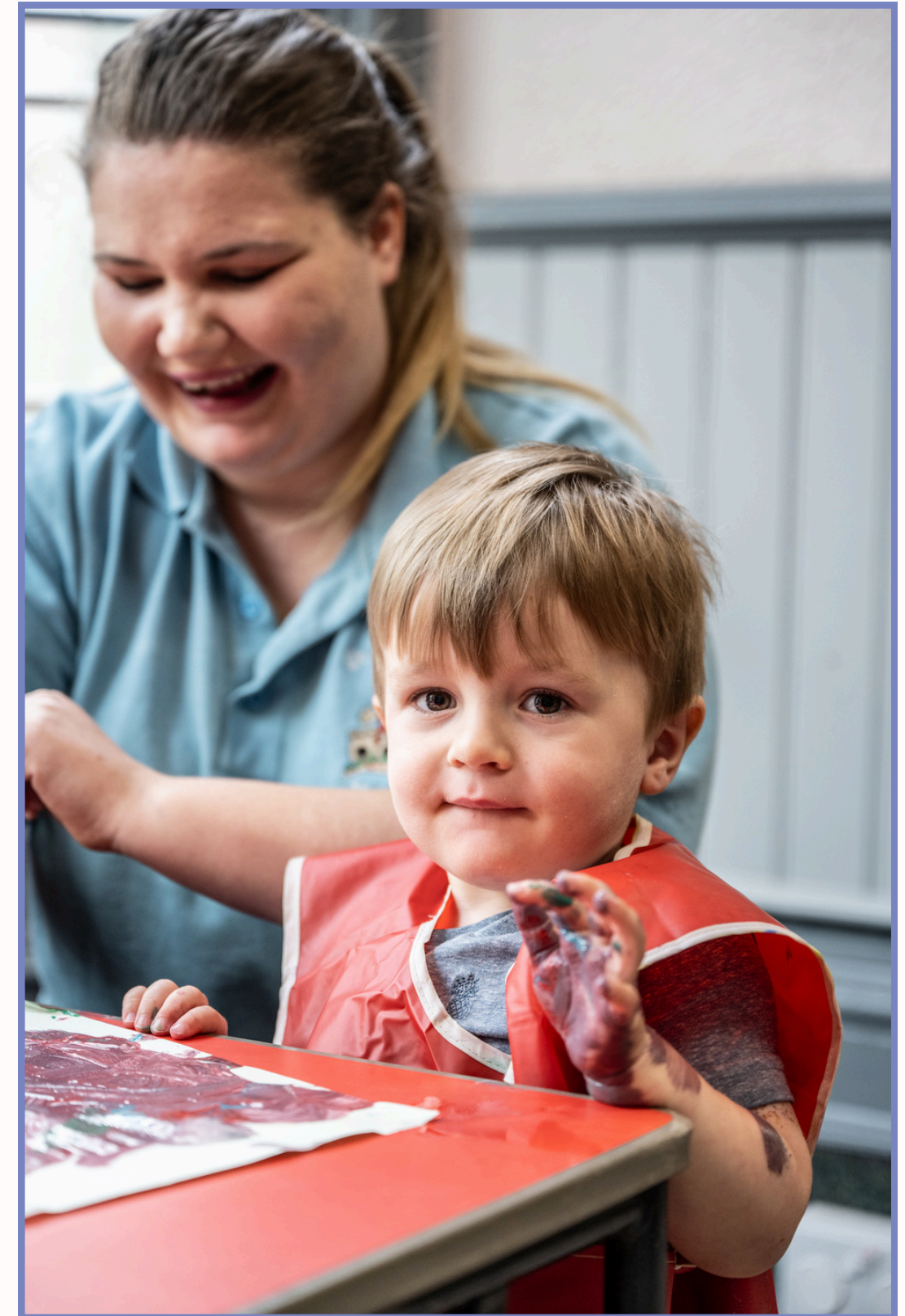
	15 HOURS FUNDING	30 HOURS FUNDING	NO FUNDING
	5 DAYS	5 DAYS	5 DAYS
Funded Hours/ Week	11.18 Free for parents	22.35 Free for parents	0
Non-Funded Hours/ Week	38.82 Charged at our published rate £271.74	27.2 Charged at our published rate £190.4	50 £350
Provision & Extras/ Week	Charge for funded hours £22.36	Charge per funded hour £44.70	N/A
Total/ Week	£294.10	£235.10	£350
Savings / Month	£223.60	£459.60	N/A



APPLYING FOR FUNDING

It might take 20 minutes for the application process. You could receive instant confirmation of eligibility, but the process might take up to 7 days. Upon approval, you'll receive a code for funded childcare to provide to St. George's Nursery. Eligibility must be confirmed every 3 months.

If you apply more than 3 months ahead of the term, you'll need to reconfirm eligibility in your account to maintain the validity of your code. If you already possess a tax-free funding account, you may need to wait until you reconfirm your details to apply for the code.



WHEN TO APPLY

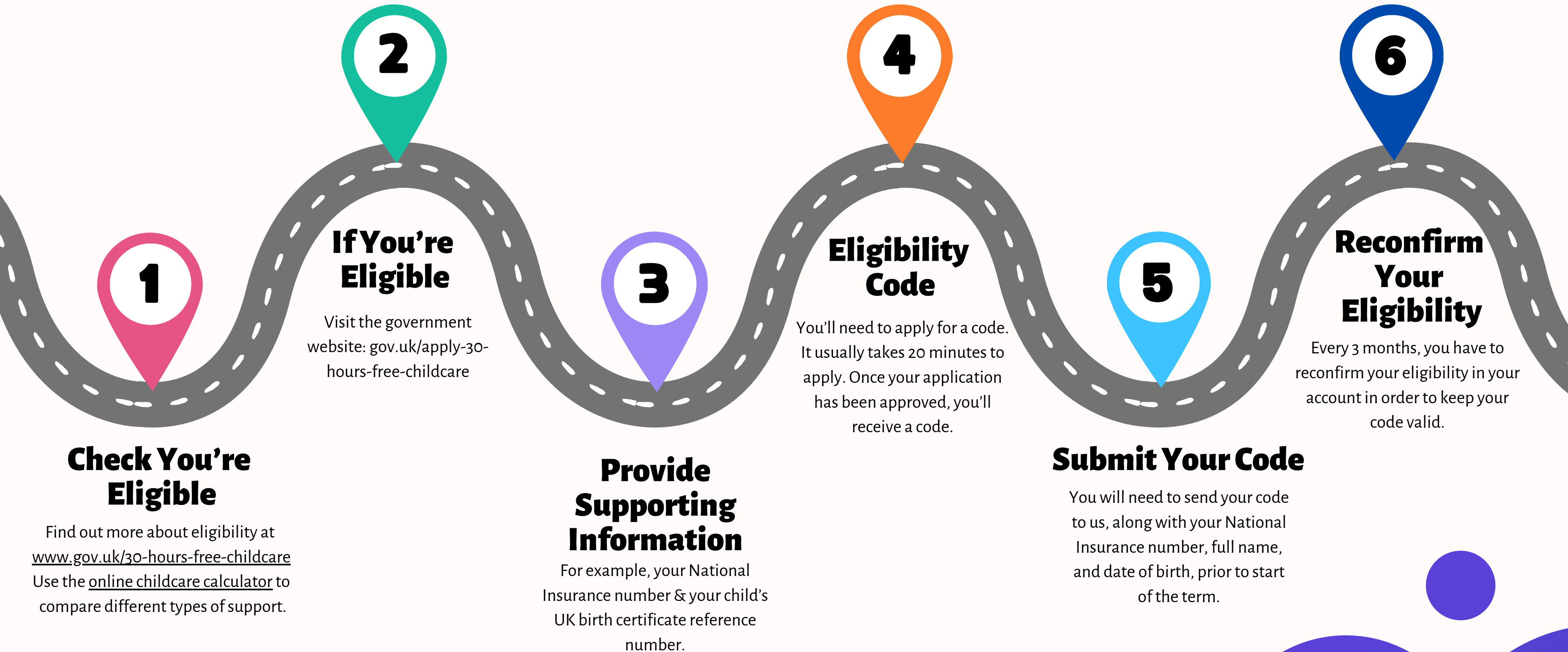
Eligibility will only start at the beginning of the school term after the code has been issued and cannot start part way through a term. Therefore, parents who wish to receive the offer will need to apply before a new school term starts.

You can apply outside of the recommended dates below, but you might not receive your code in time. You must have a valid code by the end of the month before a new term starts.

WHEN YOUR CHILD TURNS 2 OR 3	THEY CAN RECEIVE 15 OR 30 HOURS FROM	RECOMMENDED TO APPLY
1st September to 31st December	Term starting on or after 1st January	15th October to 30th November
1st January to 31st March	Term starting on or after 1st April	15th January to 28th February
1st April to 31st August	Term starting on or after 1st September	15th June to 31st July



HOW TO APPLY



FAQs



Why are my fees different from this month from last month?

If your child receives Government funding, the amount of funding to which your child is entitled differs each term depending on how many weeks there are in that term. This means that your monthly total alters each term. Monthly totals will be more in terms with fewer weeks and less in terms with more weeks.

Can I roll over my funded hours into the next term?

Due to restrictions from the local authorities, we are unable to roll over hours to the next term. However we can stretch your child's funding so you can claim your child's full funding allowance.

Do you offer free sessions?

Limited FREE/ funded only (free) spaces will be available, subject to availability. These places do not incur additional charges but have specific hour and availability limitations for attendance.

What are the minimum number of days my child needs to do?

If you are claiming 15 hours, your child must be enrolled at nursery for a minimum of 2 days. If you are claiming 30 hours, your child must be enrolled at nursery for a minimum of 3 full days. This helps to build a consistent routine as well as to take full advantage of nursery life and all the activities that we offer.

I'm planning to take my child on holiday. How will this affect my funded childcare?

Please let us know if you plan to take your child on holiday. Our team will need to check with the local authority about whether funding can continue.

St. George's Nursery

Nurturing & Inspiring Young Minds

www.stgeorgesnursery.com



**St. George's
Nursery**